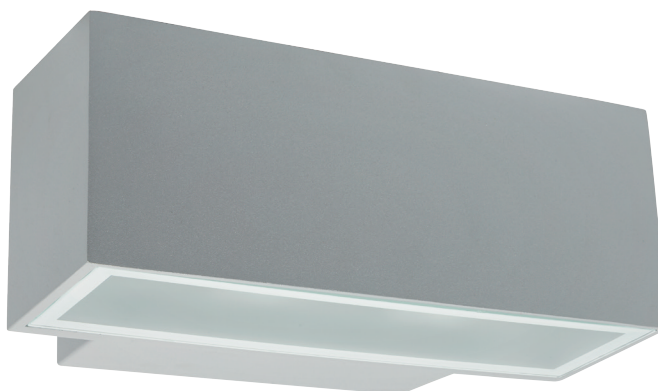


1276

TOMMASO

1277



SPECIFICATIONS:

						IP54		5 Year warranty	
One way	Two ways	2.1 kg	3K and 4K	5K	Class I				Made in Australia

CONSTRUCTION & DESIGN

- Surface mounted LED exterior wall light
- Constructed in pressure die cast aluminium alloy and finished in durable powdercoat paint
- One way or two way light distribution for direct and indirect illumination with low glare
- Flush tempered glass cover, stainless steel exposed fasteners and silicone seals provide IP54 protection

OPTICAL & THERMAL PERFORMANCE

- Efficient optical control with no harsh cut off and ultra low glare

ELECTRICAL SYSTEM

- Supplied standard with an integral leading and trailing edge dimmable driver and terminal block
- Power factor > 0.9 with active power factor correction
- Input voltage 220-240V, 50/60 Hz

TECHNICAL PERFORMANCE

- 22W or 2x14W total system power consumption with overload and short circuit protection
- >65,000 hours lifespan (L70)
- Premium quality LED Module with high lumen output per watt
- Chromaticity tolerance (MacAdam step) - 2
- Available in 3K, 4K or 5K colour temperature with low colour shift over time

CODE ORDERING GUIDE:

PRODUCT CODE / DIM CODE - COLOUR CODE

Example: 1276-3K-22W-03 or 1276-3K-22W/DALI-03

SYSTEM POWER	COLOUR TEMP.	DISTRIBUTION	67° BEAM ANGLE	HOT LED LUMENS	LUMINAIRE LUMEN OUTPUT
			PRODUCT CODE		67°
22W	3K	1-WAY	1276-3K-22W	2414	1457
	4K	1-WAY	1276-4K-22W	2584	1530
	5K	1-WAY	1276-5K-22W	2520	1502
2x14W	3K	2-WAY	1277-3K-28W	3312	1968
	4K	2-WAY	1277-4K-28W	3480	2086
	5K	2-WAY	1277-4S-28W	3405	2029

DIM CODE		22W	2x14W
/DALI	Dali Dimming / Switch Dim	✓	✓
/DSI	Digital Dimming	✓	✓
/AD	Analogue Dimming 1-10V	✓	✓
	Leading & Trailing edge	Std	Std

COLOUR CODE		
-03		Textured White
-07		Textured Black
-11		Textured Silver

